

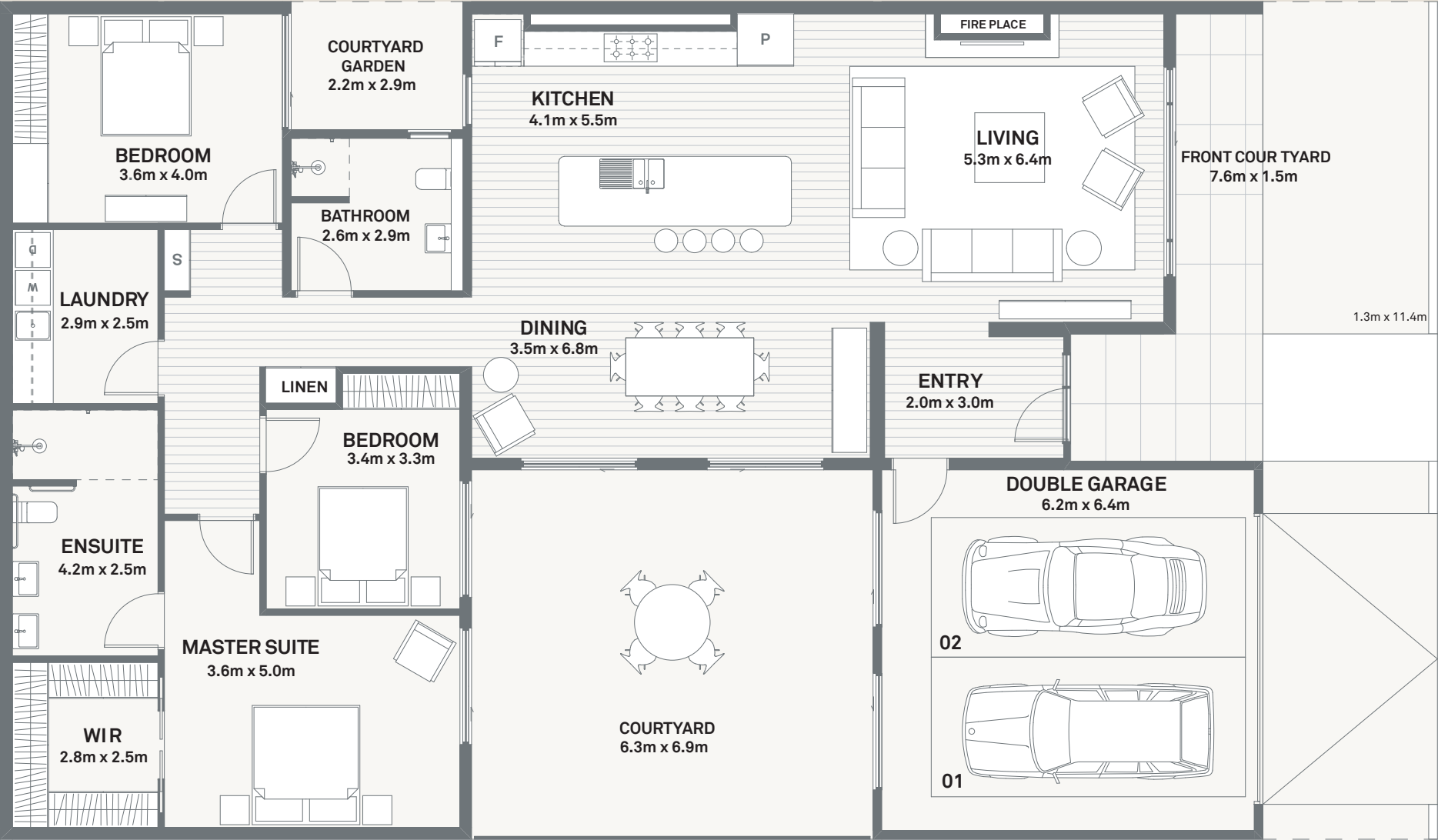
# FLOOR PLAN: COURTYARD VILLA

LUXURY LIVING

GIBRALTAR  
PARK



Three bedrooms, two bathrooms, double garage  
 Measurements: Internal: 229m<sup>2</sup> (including garage), External Area: 65m<sup>2</sup> Total Area: 294m<sup>2</sup>  
 Please note: Villas are under construction and dimensions are approximate. Floorplans are indicative.



# FLOOR PLAN: VISTA VILLA

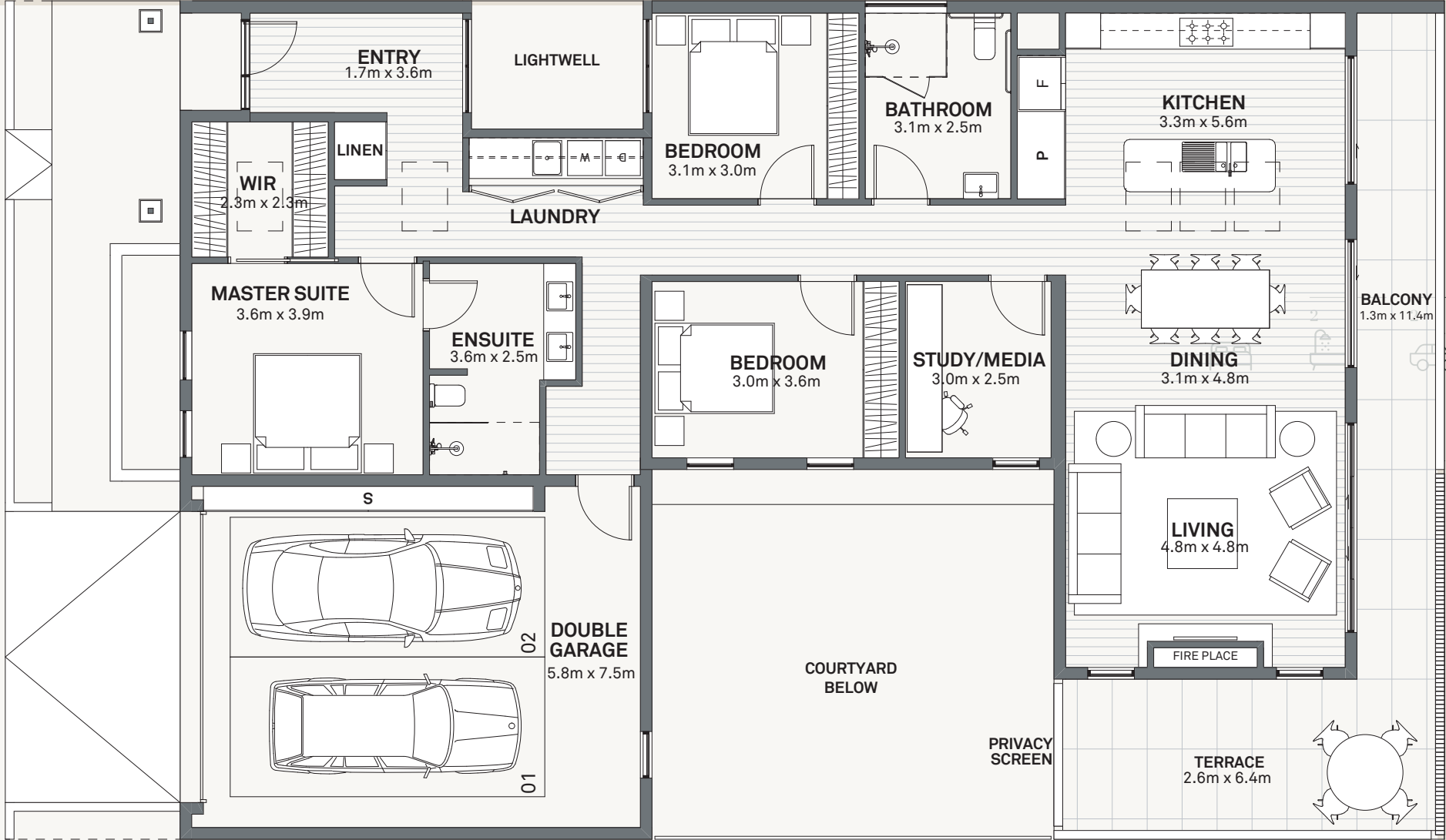
LUXURY LIVING

GIBRALTAR  
PARK



Three bedrooms, two bathrooms, one study, double garage  
Measurements: Internal: 208m<sup>2</sup> (including garage), External Area: 32m<sup>2</sup> Total Area: 240m<sup>2</sup>  
Please note: Villas are under construction and dimensions are approximate. Floorplans are indicative

1:100 0 1 2 3 4 5 6



# GIBRALTAR PARK: SITE MAP

LUXURY LIVING

GIBRALTAR  
PARK

